

TITAN

INVENTORY MANAGER

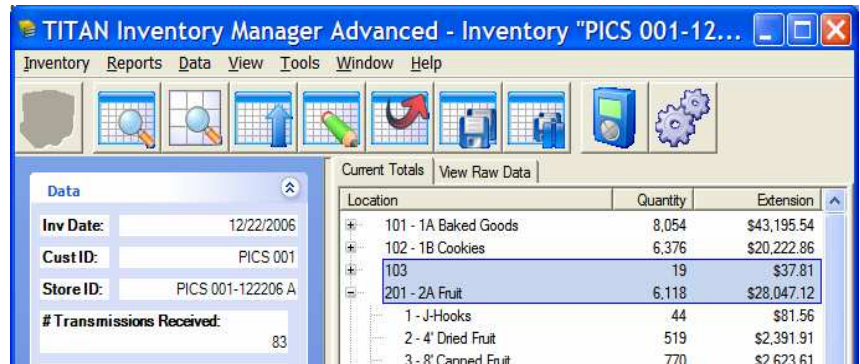
EVERYTHING YOU NEED TO EFFECTIVELY MANAGE YOUR INVENTORY FROM START TO FINISH

TITAN Inventory Manager is a powerful yet simple-to-use tool that will allow you to consolidate your inventory collection data on a PC to review, edit, validate, report and export the information for your customer. Using TITAN Inventory Manager you will have the power and flexibility to ensure that your inventory is completed accurately and on time.

TITAN Inventory Manager provides the functionality needed to ensure your inventory data is complete, accurate and ready for your customer. This tool will upload inventory data (transmissions) from the TITAN handheld and consolidate multiple transmissions into a single file while maintaining the order in which the data was collected. Once consolidated, TITAN Inventory Manager offers robust features useful in inventories of any size or complexity. Some of these features include:

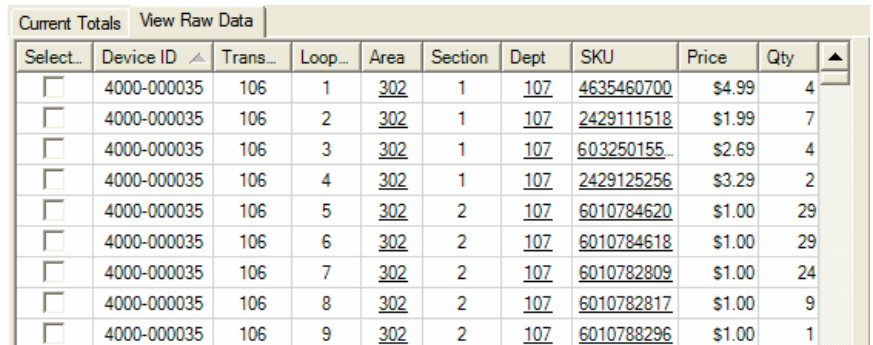
View Data During the Inventory:

- View number of transmissions
- View time that last transmission was received
- View number of Areas or Categories counted
- View total pieces counted
- View total inventory value
- View totals by Area/Category
- View transmissions record-by-record or by summary
- Search or filter for specific values
- Sort data by any field
- Design and run advanced data queries



The screenshot shows the 'Data' tab of the TITAN Inventory Manager. On the left, there are fields for 'Inv Date: 12/22/2006', 'Cust ID: PICS 001', 'Store ID: PICS 001-122206 A', and '# Transmissions Received: 83'. On the right, a table shows 'Current Totals' for various locations:

Location	Quantity	Extension
101 - 1A Baked Goods	8,054	\$43,195.54
102 - 1B Cookies	6,376	\$20,222.86
103	19	\$37.81
201 - 2A Fruit	6,118	\$28,047.12
1 - J-Hooks	44	\$81.56
2 - 4' Dried Fruit	519	\$2,391.91
3 - 8' Canned Fruit	770	\$2,623.61



The screenshot shows the 'View Raw Data' table with columns: Select, Device ID, Trans, Loop, Area, Section, Dept, SKU, Price, Qty. The data rows are as follows:

Select	Device ID	Trans	Loop	Area	Section	Dept	SKU	Price	Qty
<input type="checkbox"/>	4000-000035	106	1	302	1	107	4635460700	\$4.99	4
<input type="checkbox"/>	4000-000035	106	2	302	1	107	2429111518	\$1.99	7
<input type="checkbox"/>	4000-000035	106	3	302	1	107	603250155...	\$2.69	4
<input type="checkbox"/>	4000-000035	106	4	302	1	107	2429125256	\$3.29	2
<input type="checkbox"/>	4000-000035	106	5	302	2	107	6010784620	\$1.00	29
<input type="checkbox"/>	4000-000035	106	6	302	2	107	6010784618	\$1.00	29
<input type="checkbox"/>	4000-000035	106	7	302	2	107	6010782809	\$1.00	24
<input type="checkbox"/>	4000-000035	106	8	302	2	107	6010782817	\$1.00	9
<input type="checkbox"/>	4000-000035	106	9	302	2	107	6010788296	\$1.00	1

Modifications and Validation

TITAN Inventory Manager allows you to edit the uploaded data and validate any modifications with the same TITAN script that is used by the handheld during data entry. This feature allows corrections while ensuring that all data integrity rules are maintained. Any modified data is flagged in the database to indicate that it has been edited; however, the original entries are maintained for audit trail purposes.

Export Inventory Data

- Export data to multiple formats (including United Software, ASCII delimited, Excel, or any ODBC-complaint database).
- Print or export reports to any format supported by Crystal Reports (including PDF, Excel, Word, and text).

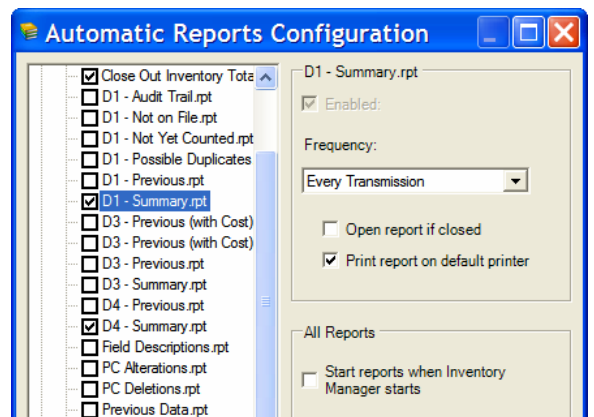
Reporting

- View and print reports at any time during or after the inventory process.
- Take advantage of the numerous standard reports, or design your own using Crystal Reports.
- Incorporate customer logos, contact information, and data descriptions in all reports.
- Automatic report configuration, allows you to schedule reports to run at specified time intervals or specified events, such as every new transmission.

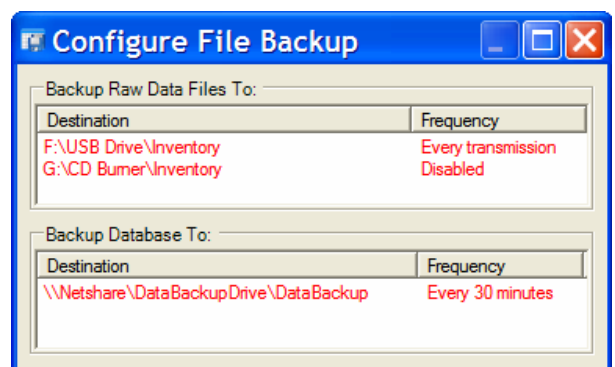
Advanced Reporting Features

Barcode	Description	Extension	Qty
1	#1 Checkout	\$268.63	37.0
2	#2 Checkout	\$1,459.99	1,221.0
3	#3 Checkout	\$3,377.02	2,208.0
4	#4 Checkout	\$2,683.91	2,655.0
5	#5 Checkout	\$3,537.55	2,951.0
6	#6 Checkout	\$2,969.16	2,688.0
7	#7 Checkout	\$3,342.43	2,218.0
8	#8 Checkout	\$2,499.32	2,070.0
9	#9 Checkout	\$3,288.18	2,158.0
10	U Scan	\$1,473.35	769.0
11	Lane Blockers	\$1,989.61	690.0
12	Next To Receipts	\$3,150.58	750.0
13	First Window/Outside	\$7,429.69	1,301.0
14	First Of Serv Cntr	\$19,676.84	2,459.0
15	Behind Serv Cntr	\$28,798.01	2,574.0
16	Front By Rx	\$8,019.78	1,620.0
17	Officer/Cops	\$4,511.88	102.0
18	Front Vestibule	\$319.64	98.0
19	Grnc In Produce	\$5,625.34	814.0
20	Cleanance Area	\$3,245.57	1,873.0
21	Del Area	\$5,122.32	1,408.0
22	Rear Wall Misc	\$76,130.63	10,509.0
23	Bakery Area	\$3,050.62	1,186.0
24	3 Dairy Bakers	\$9,909.41	3,056.0
25	Grocery In Dairy	\$3,547.22	1,988.0
26	Eggs - 12"	\$3,087.21	1,251.0
27	Cheddar Cheese - 8"	\$2,645.14	1,168.0
28	Cheese - 8"	\$4,408.02	1,299.0

Automatic Report Configuration



Automatic File Backups



Manage multiple customers' inventories on a single PC

Customer Name	Store Name	Store ID	Inventory Name	Inventory Date	Status	Closed	Notes
Test Supermarket	Test Superma	301009-315	301009-315-031507	3/15/2007	Suspended	No	New Titan Co.
Federline Foods	Federline Foo	#001-001	# 001 -001-121 405	12/14/2006	Suspended	No	
Federline Foods	Federline Foo	#001-001	#0 01-0 01- 123 595	12/21/2006	Suspended	No	
scan test	scan test #001	scan test #001	scan test #001-032307	3/23/2007	Suspended	No	

A.S.T., Incorporated

4150 Grange Hall Road • Holly, MI 48442 • Phone: (248) 328-5000 • www.astmi.com