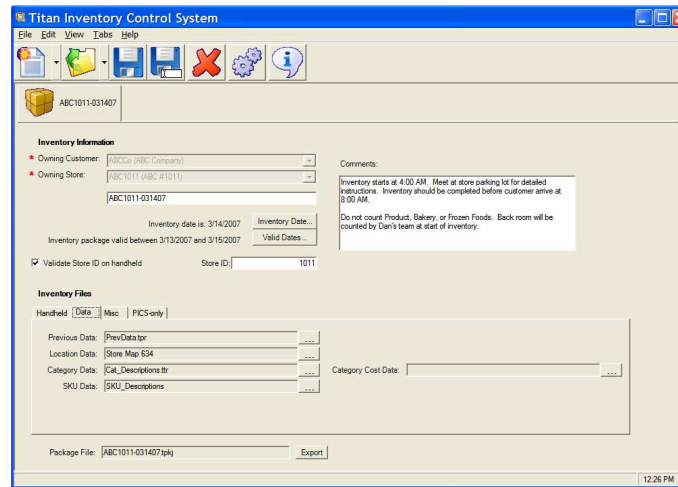


TITAN

INVENTORY CONTROL SYSTEM

MANAGING YOUR INVENTORY RESOURCES AND PACKAGING THEM ALL TOGETHER

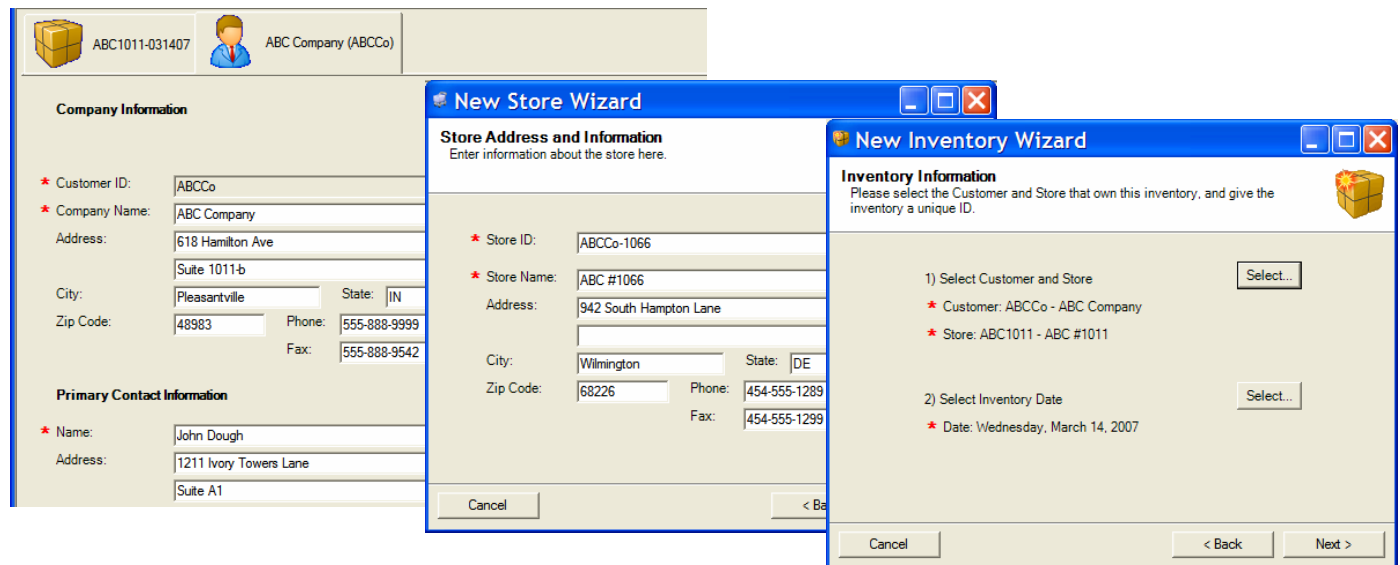
TITAN Inventory Control System is a tool that helps manage your inventory resources, by organizing all files that are needed to conduct an inventory and by maintaining those files per customer and/or store.



FEATURES:

- Create and manage multiple stores per customer
- Enter customer & store addresses, phone numbers, and contact information
- Share files among stores or copy files from customer to customer
- Enter your company's logo and contact information for use in inventory reports
- Map stores by importing valid areas, sections, shelves, categories, etc.
- Import previous inventories from customer sources
- Update inventory package as data is received from the customer
- Stamp the package file with a valid date range to prevent using an inventory package at the wrong store

Manage Inventory Resources per Customer or Store



TITAN

INVENTORY CONTROL SYSTEM

TITAN Inventory Control System provides the functionality needed to ensure your inventory data is complete, accurate and ready for your customer. This tool will create a single inventory package that you can take to the store and plug into TITAN Inventory Manager for conducting the inventory. When the inventory is complete, use TITAN Inventory Control System to make notes about the inventory, store, or customer, and to archive the package, including inventory data and results, for the next scheduled inventory.

Import Customer Validation Files

New Inventory Wizard

Validation Data
Please select the validation data for this inventory here.

Get the validation data from the database

Get validation data from an existing inventory

Get a validation data file

Create a new validation data file

File Selected: bk002.tvf

Import Previous Inventory Results

New Inventory Wizard

Previous Data
Please select any previous data for this inventory here.

Get previous data from an existing inventory

Get a previous data file

Create a new previous data file

File Selected: PrevData.tpr
9/23/2006, 24,155 pieces, \$211,759.30

INVENTORY RESOURCE FILES may include:

- **SCRIPT FILES**, which tell the TITAN how to collect, validate, and store the data
- **VALIDATION FILES**, which contain the database values against which the TITAN input is validated
- **TRANSLATION FILES**, which contain the area & SKU descriptions and other cross-referenced information to be displayed on inventory reports
- **CUSTOM REPORTS**, which accommodate customers with unique report specifications
- **PREVIOUS INVENTORY RESULTS**, which summarize previous inventories for comparison with the current
- **CUSTOMER, STORE, AND <YOUR COMPANY'S> INFORMATION**, which includes logos, addresses and contact information for use in inventory reports
- **EXPORT FORMAT SPECIFICATIONS**, which defines the format of the customer/store output file produced at the close of inventory

Mark Inventory Package with a Valid Date

Choose The Range Of Valid Dates

Use Start Date Use End Date

March, 2007

Sun	Mon	Tue	Wed	Thu	Fri	Sat
25	26	27	28	1	2	3
4	5	6	7	8	9	10
11	12	13	14	15	16	17
18	19	20	21	22	23	24
25	26	27	28	29	30	31
1	2	3	4	5	6	7

Today: 3/14/2007

March, 2007

Sun	Mon	Tue	Wed	Thu	Fri	Sat
25	26	27	28	1	2	3
4	5	6	7	8	9	10
11	12	13	14	15	16	17
18	19	20	21	22	23	24
25	26	27	28	29	30	31
1	2	3	4	5	6	7

Today: 3/14/2007