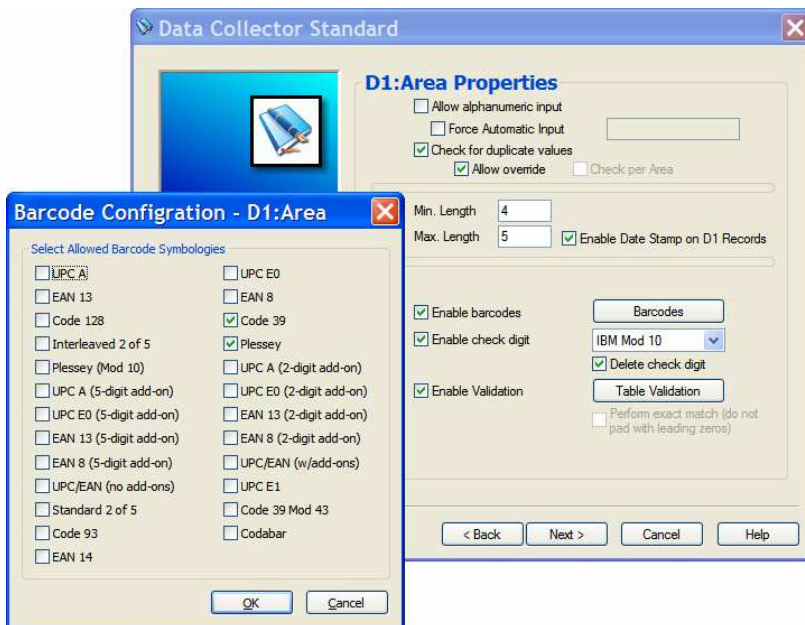


TITAN

EPG DATA COLLECTOR

SOPHISTICATED, CUSTOMIZED DATA COLLECTION *WITHOUT* PROGRAMMING!

TITAN EPG Data Collector is the inventory world's best software development tool, designed for the inventory world's best data collection device - the TITAN.



TITAN EPG DATA COLLECTOR: POWER & FLEXIBILITY

- FINANCIAL INVENTORIES
- SKU INVENTORIES
- PRICE CHECKING
- STOCK REORDERING
- BACK-ROOM STOCK REPLENISHMENT
- CONFIGURABLE DATA FIELDS
- CUSTOMIZABLE OPTIONS
- BARCODE & CHECK DIGIT SUPPORT
- DATABASE VALIDATION ON DATA ENTRY
- BARCODE LABEL PRINTING
- WINDOWS 2000/XP COMPLIANT

TITAN EPG DATA COLLECTOR

TITAN EPG Data Collector provides the essential functionality needed to ensure your inventory is a complete success. With TITAN EPG Data Collector's power and flexibility (field validation, barcode configuration, dollar value checks, and numerous other features and options), you will be able to accommodate any customer request.

With TITAN EPG Data Collector's user-friendly design, you will be amazed at how quickly and easily you can create the scripts needed to conduct your inventories – with minimal effort and maximum returns.

TABLE VALIDATION ON THE TITAN

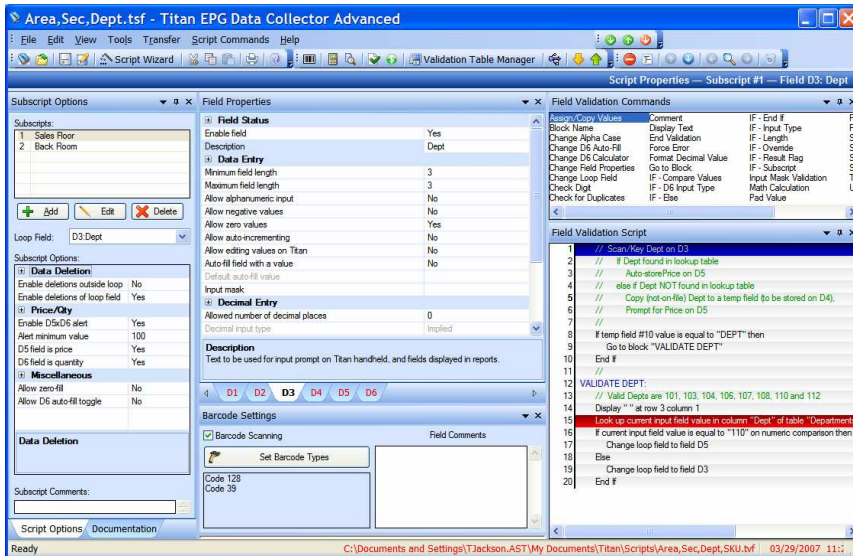
TITAN EPG Data Collector is the ultimate tool for ensuring that your data is collected quickly and accurately. Table validation allows your scripts to reference master files on the TITAN itself to make sure that data is correct at the point of entry. Table validation can also be used for price checks and stock level checks.

TITAN

EPG DATA COLLECTOR

SCRIPT COMMANDS

TITAN EPG Data Collector offers script commands for truly powerful control over your inventory. These commands allow you to perform a wide variety of data manipulation and conditional operations to make sure your inventory meets each and every customer demand.



WORKS WITH ALL TITAN HANDHELDS AND WITH INVENTORY MANAGER

TITAN EPG Data Collector also includes a copy of TITAN Inventory Manager Standard, which allows you to send scripts to the TITAN and upload data from the TITAN to the PC. Inventory Manager Standard also allows you to export your data for your customer or your back-end processing system.

Upgrade to the advanced version of TITAN Inventory Manager for a complete back-end solution, which includes queries, reports, alterations, backups, and additional export capabilities. (Contact your A.S.T., Inc. representative for details.)

TITAN EPG Data Collector Features	
Standard	Advanced
<ul style="list-style-type: none"> • 5 standard template scripts • Database validation • Per-field barcode configuration • Nameable fields • Configurable loop field • Quantity x price alerts • Configurable implied or keyed decimal points • Field length checks • Controlled alphanumeric input • Controlled negative values • Multiple currency symbols • Save scripts for re-use • Supports 25 common barcode symbologies 	<ul style="list-style-type: none"> • All EPG Data Collector Standard features, plus... • 36 additional sub-fields • Data manipulation (* see "Script Commands") • Configurable check-digit algorithms • Barcode label printing • Field date/time stamps • Script Commands <ul style="list-style-type: none"> ○ Assign Value ○ Change Field Properties ○ Check Input Type ○ Compare Values ○ Force Error ○ Subroutine Block ○ Table Lookup ○ ... and much, much more!

TITAN EPG Data Collector works with all TITAN handhelds.



TITAN 4000